

ROAD-METER



The Fisco Road-Meter is a robust measuring wheel for professional surveying, highway and site work. The wheel frame is constructed from high quality polypropylene which is virtually unbreakable and can withstand rigorous use. The spokes are sturdily designed to minimise wind resistance, which makes the Road-Meter easy to use in difficult weather conditions. The high visibility yellow offers added safety for highway use.

The tyre is made of an abrasion resistant material which is cast onto the wheel to ensure a close fit, and to maintain the highest level of accuracy. At any point on the tyre the thickness is exactly 22mm so that the wheel will not tilt or generate variable readings. The cast forks incorporate a pointer for precise recordings.

Balanced centrally over the wheel, the precision counter has large clear reading numbers which can measure up to 10 kilometres in one stretch. The simple zeroing lever enables instant resetting, and the counter can be run backwards to subtract accurately any over-run.

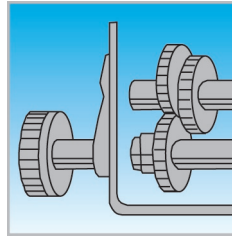
The Road-Meter comes equipped with a foot operated folding stand and a brake for start/stop measuring. The dirt remover maintains accuracy during use.

ROAD-METER SPECIFICATION

- Circumference - 1m.
- Height - 900mm.
- Weight - 2.7kg.
- Counter range - 9999.99m.

PRODUCT CODES

Road-Meter WH10



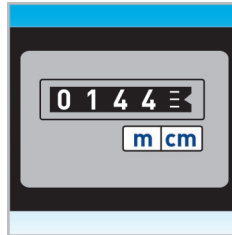
• Robust

Tough, metal gearing and working parts for longevity.



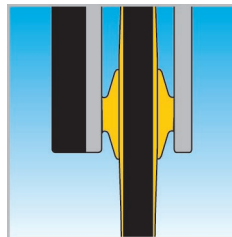
• Belt drive

Easier to replace and more durable than other mechanisms.



• Clear reading counter mechanism

Displays metres and centimetres, has an instant reset lever and is accurate to 0.1%.



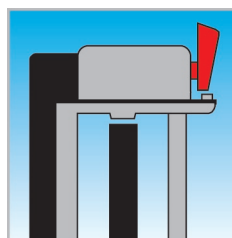
• Fork frame

An extremely tough die-cast fork frame which holds wheel bearings.



• Easy to dismantle

Swivel link folds sideways for quick collapse and packing.



• Integral dirt scraper

Removes dirt to keep wheel accurate.



• Easy to use

Foot operated brake locks the wheel at the required measurement. The folding stand can be steadied by a foot to prevent wheel being blown over by wind or traffic movement.



• Pointer

Clearly visible for accurate start and end readings.